



PRESENTED BY
MUCK RACK

KNOW BEFORE YOU GO

PRSA #SUNCON23 PRESENTED BY MUCK RACK
JULY 27-28, 2023

SCHEDULE OF EVENTS

Please find the full conference schedule [HERE](#). Printed copies will be available on site upon check in.

On Thursday, July 27, join us for an evening of networking with friends old and new at our #SunCon23 Welcome Reception in the Wolfe University Center (WUC) 244 (Ballroom) from 5-7 p.m. at FIU's Biscayne Bay Campus.

On Friday, July 28, our "grab and go" continental breakfast and networking will take place beginning at 8 a.m. in the WUC Hall 244 A&B at FIU's Biscayne Bay Campus, with the official start to the program kicking off at 8:45 a.m.

ATTIRE

Business casual (some rooms may be cold; please plan accordingly).

LOCATION

Florida International University Biscayne Bay Campus
Wolfe University Center (WUC)
3000 NE 151st St
North Miami, FL 33181

Note: All #SunCon23 sessions will be held in the WUC 221, 223, 244 (Ballroom), and Theater. Please see event maps below.

POINT OF CONTACT

Carthy Frye-Thomas
SunCon23 Co-Chair
PRSA Miami Chapter President
305-302-2310

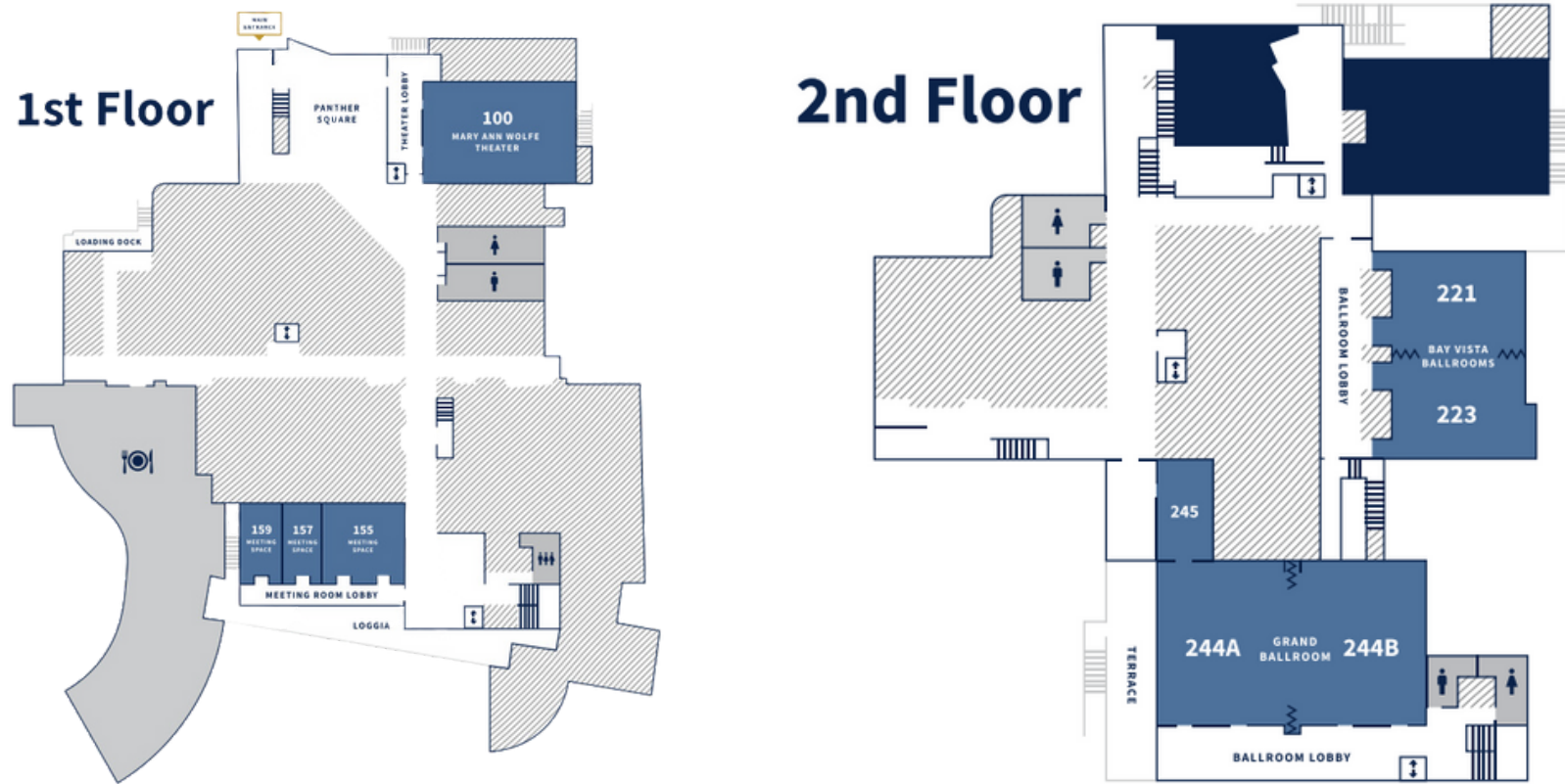


KNOW BEFORE YOU GO

PRSA #SUNCON23 PRESENTED BY MUCK RACK
JULY 27-28, 2023

PRESENTED BY
MUCK RACK

EVENT MAPS



PARKING

#SunCon23 will provide complimentary parking for those registering their vehicles ahead of time. Parking is available in Lots 1, 2, 3, and 4. Lot 1 is the closest to the WUC (as shown in the image below).

You need a separate permit for each day you park on campus. For Thursday, July 27, please complete the form [HERE](#). For Friday, July 28, please complete the form [HERE](#).

If you don't pre-register for the complimentary parking, you must pay via the PaybyPhone app.





KNOW BEFORE YOU GO

PRSA #SUNCON23 PRESENTED BY MUCK RACK
JULY 27-28, 2023

PRESENTED BY
MUCK RACK

SOCIAL MEDIA HANDLES



PRSA Sunshine District
PRSA Greater Fort Lauderdale
PRSA Miami



PRSA Sunshine District
PRSA Greater Fort Lauderdale Chapter
PRSA Miami Chapter
FIU School of Communication



@PRSAFTL
@PRSAMiami
@FIUGSC
@FIUCommunication

#SunCon23 #PRSASunshine #FIUGSC

WIFI ACCESS

To access FIU's open wifi network, select FIU_WiFi from your list of network options and follow the instructions.

A screenshot of a mobile device screen showing the FIU Guest WiFi connection interface. At the top, the FIU logo is displayed in large, bold, yellow-outlined letters, followed by the text 'FLORIDA INTERNATIONAL UNIVERSITY' in white. Below this, the title 'FIU Guest WiFi' is centered. A paragraph explains that FIU_WiFi provides wireless network access for guests. A warning states that the network is open, limited, unsecured, and unencrypted, and should not be used for university business. A note specifies that the session will remain active until 3 a.m. A section for 'Faculty, staff, and students' advises connecting to the secure FIU_SECUREWiFi network. At the bottom, there is a blue 'Connect' button and a link to the terms of use.

FIU

FLORIDA
INTERNATIONAL
UNIVERSITY

FIU Guest WiFi

FIU_WiFi provides guests with wireless network access.

The FIU_WiFi wireless network is an open (does not require a password), limited (restricted bandwidth), unsecured and unencrypted network. FIU_WiFi does not have the added security to protect FIU's sensitive data and must not be used for University business.

Note: After connecting, your session will remain active until 3 a.m.

Faculty, staff, and students:

Connect to FIU's official wireless network, FIU_SECUREWiFi, which is a secure and encrypted network.

Connect

By clicking connect, you agree to our [terms of use](#)